

## Supplementary material for

### **Suicide Deaths Associated with Climate Change-Induced Heat Anomalies in Australia: A Time-Series Regression Analysis**

Lucas Hertzog<sup>\*1,2,3</sup>, Fiona Charlson<sup>4</sup>, Petra Tschakert<sup>5</sup>, Geoffrey G. Morgan<sup>3,6,7,8</sup>, Richard Norman<sup>1,3</sup>, Gavin Pereira<sup>1,2,9</sup>, Ivan C. Hanigan<sup>1,2,3,8</sup>

<sup>1</sup> Curtin School of Population Health, Faculty of Health Sciences, Curtin University, WA 6102, Australia.

<sup>2</sup> WHO Collaborating Centre for Climate Change and Health Impact Assessment, WA 6102, Australia.

<sup>3</sup> Healthy Environments and Lives (HEAL) National Research Network, Australia.

<sup>4</sup> Queensland Centre of Mental Health Research and School of Public Health, University of Queensland

<sup>5</sup> School of Media, Creative Arts and Social Inquiry, Curtin University, WA 6102, Australia.

<sup>6</sup> School of Public Health, Faculty of Medicine and Health, University of Sydney, Camperdown, NSW 2006, Australia.

<sup>7</sup> University Centre for Rural Health, Faculty of Medicine and Health, University of Sydney, Lismore, NSW 2480, Australia.

<sup>8</sup> Centre for Safe Air, NHMRC CRE

<sup>9</sup> enAble Institute, Faculty of Health Sciences, Curtin University, WA 6102, Australia.

\*Correspondence:

[lucas.hertzog@curtin.edu.au](mailto:lucas.hertzog@curtin.edu.au)

400.233, Curtin University, Kent St, Bentley WA 6102

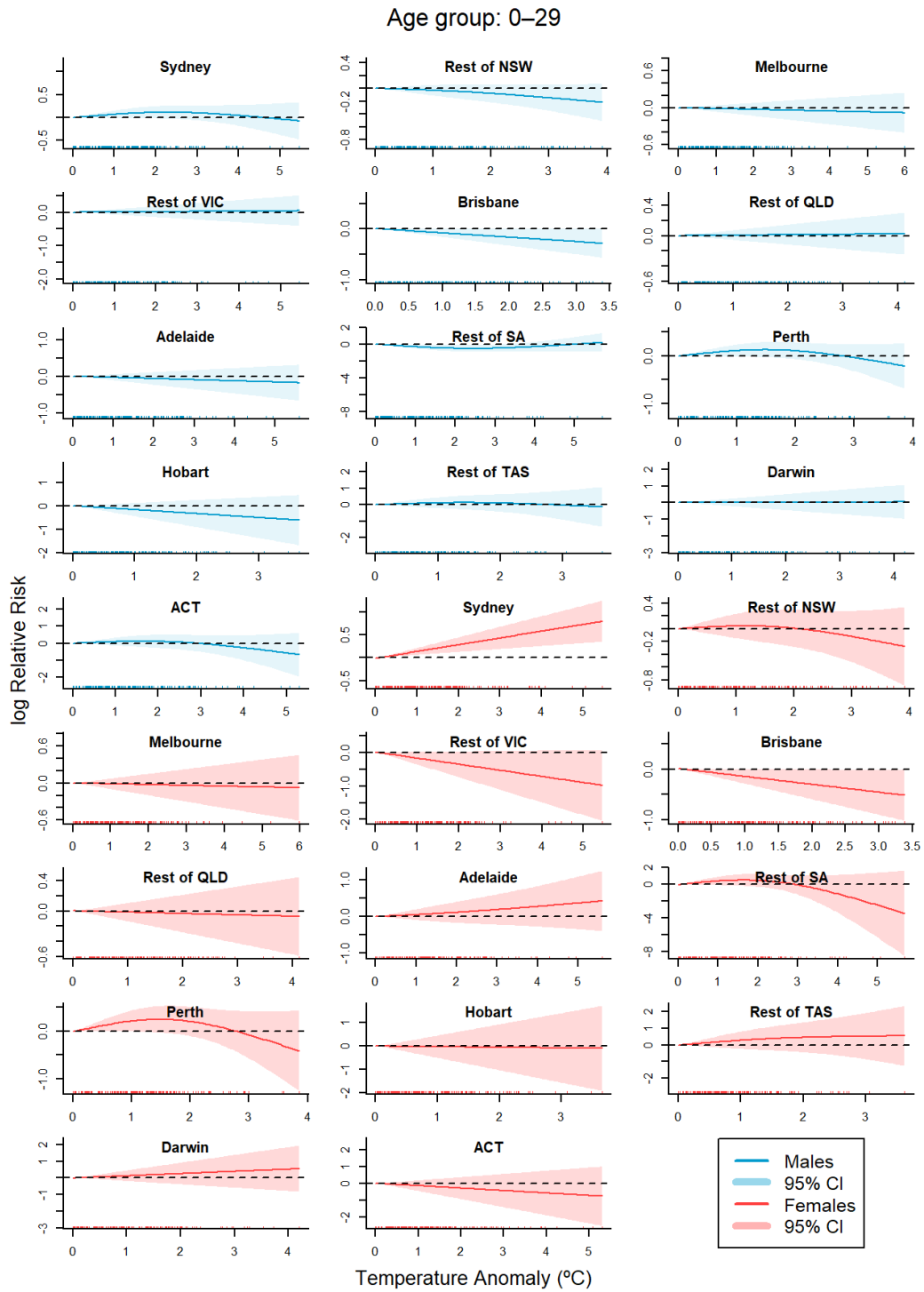


Figure S 1 Association between suicide risk and heat anomaly for the age group from 0 to 29 years, disaggregated by sex and GCCSAs.

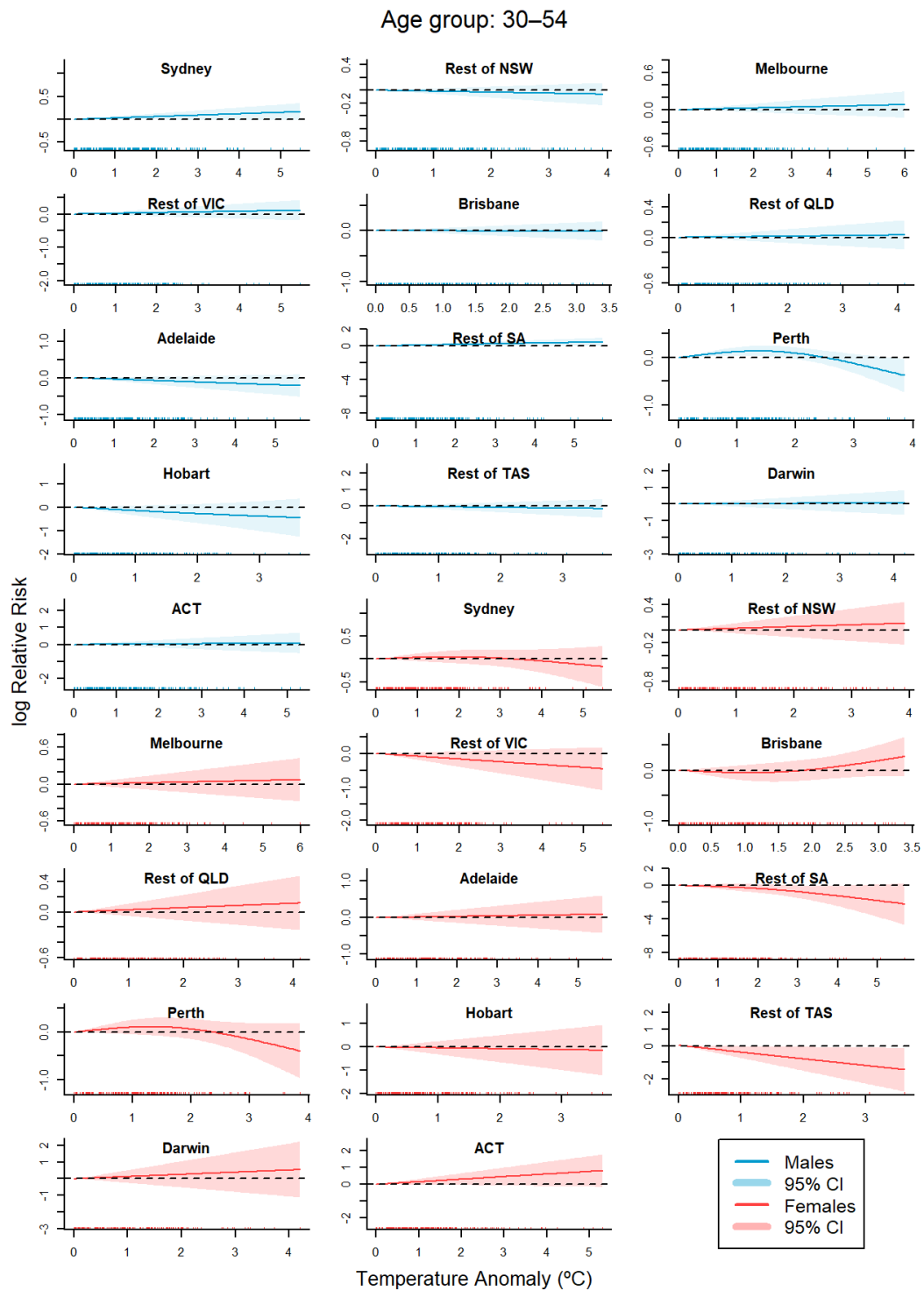


Figure S 2 Association between suicide risk and heat anomaly for the age group from 30 to 54 years, disaggregated by sex and GCCSAs.

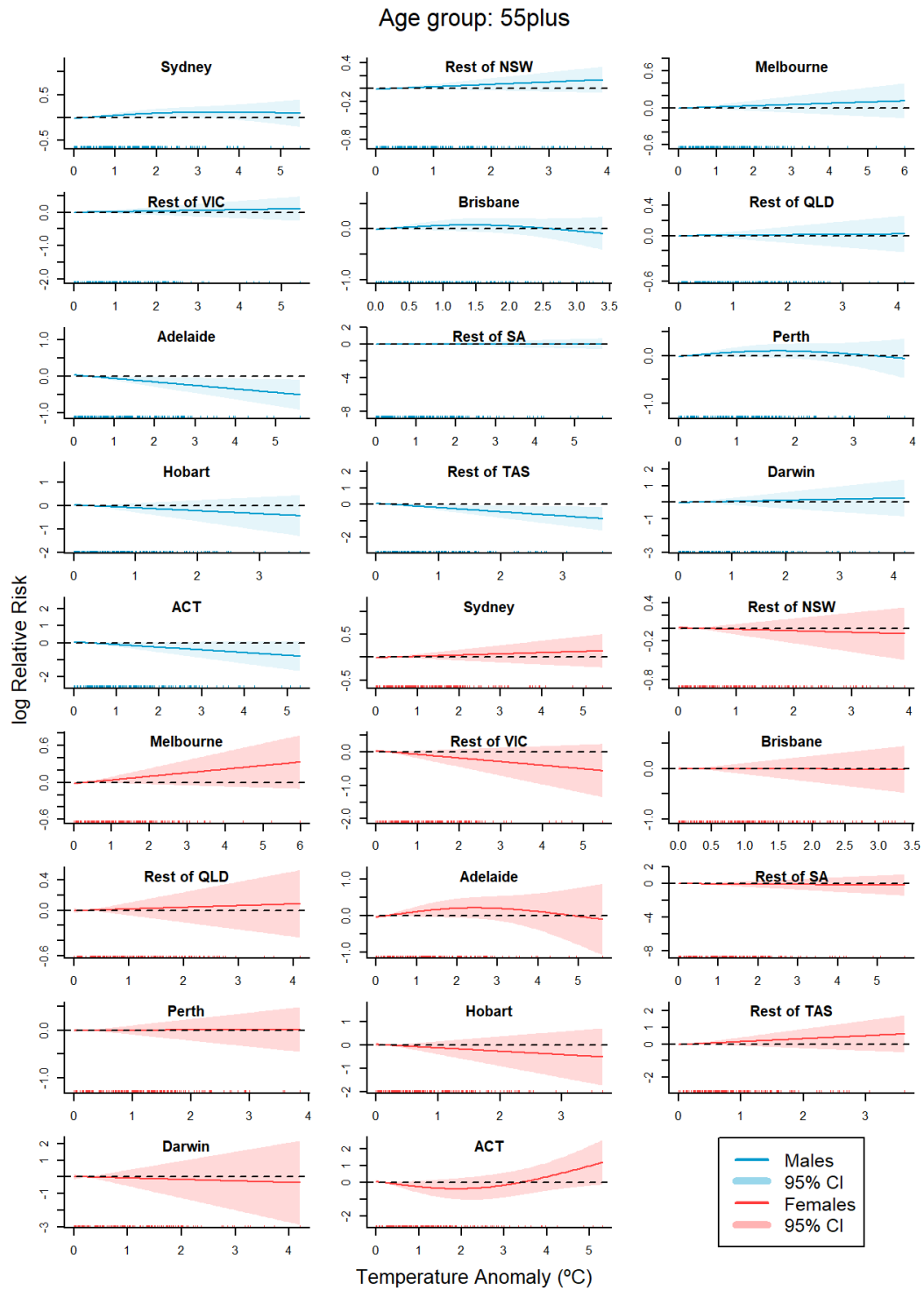


Figure S 3 Association between suicide risk and heat anomaly for the age group with more than 55 years, disaggregated by sex and GCSAs.